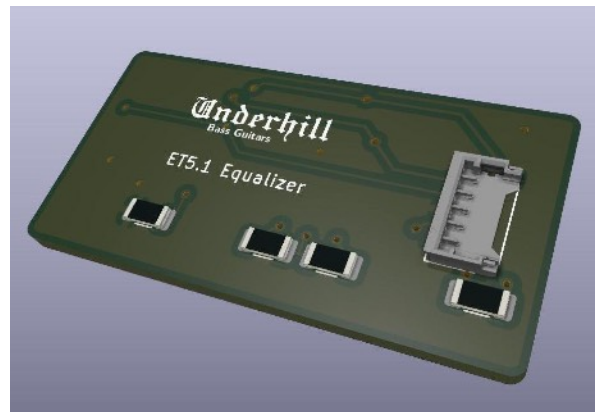
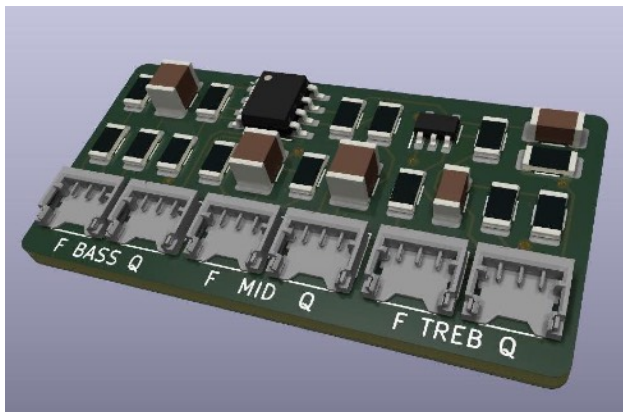


User Manual

ET5 Three Band Equalizer

Overview

The ET5 is a three band parametric equalizer that plugs into Underhill preamps. It uses three stacked potentiometers to control bass, mid, and treble bands. The upper knob on each pot is a boost/cut control with a center detent for flat response. The lower knob is a frequency sweep for the respective band. The bass and treble bands are a shelving type filter, and the mid band is a peaking filter.



Installation

Connect the equalizer to the filter slot on the PD or PS preamp with a five wire filter cable. Mount the three control pots on the bass with cables attached, and then plug the cables into the bass, mid and treble connectors on the ET5. Make sure to read the manual for your PD or PS preamp to set the switch configurations for the filter slots, depending on whether you are using an EQ bypass switch.

On the PD preamp, the ET5 is typically installed in the M filter position, which applies it to the post-blend signal. On the PS preamp, the ET5 can be used in either A or M position.

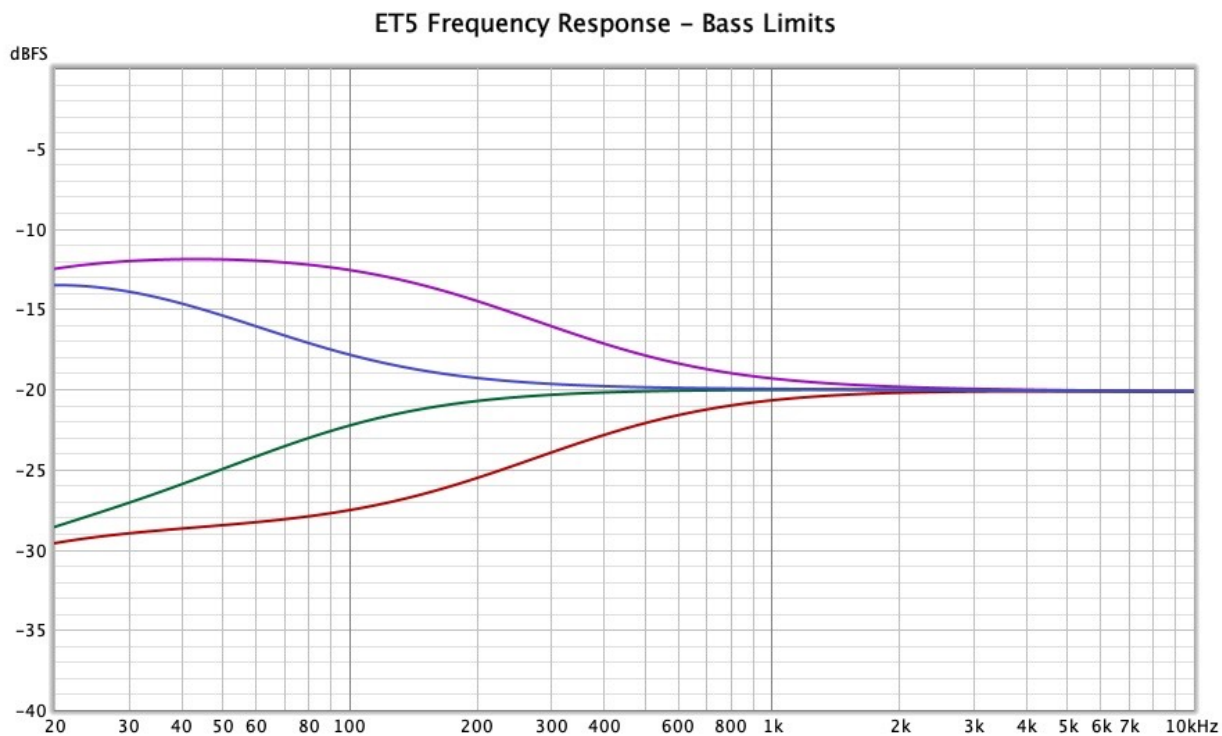
Setup and Adjustment

There are no adjustments on the ET5. Test your equalizer after installation to make sure both the frequency and boost controls are working. A loud “motorboating” noise means the cables are probably reversed.

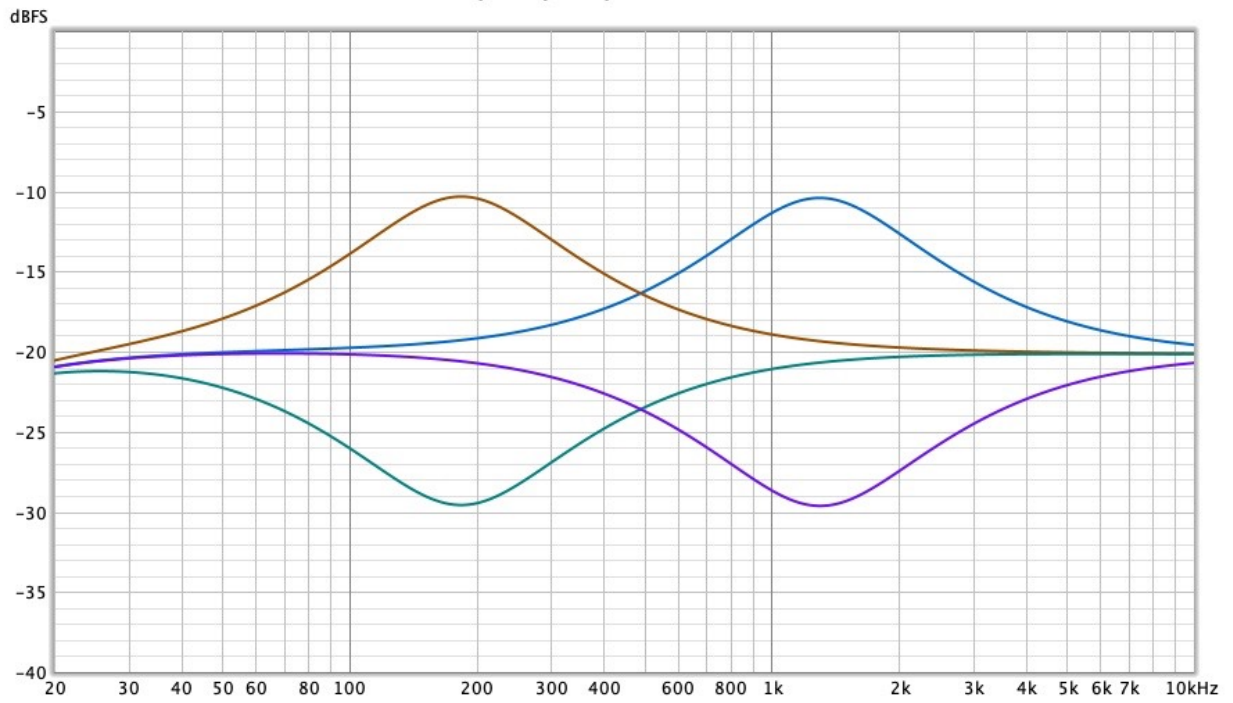
Specifications

The standard ET5 filter has the following specifications. For custom tunings, contact tim@underhillbass.com to discuss options and prices.

Supply voltage	9-18V (supplied by PD)
Bass frequency (variable)	40-180 Hz
Bass boost/cut (variable)	± 8 dB
Mid frequency (variable)	170-1300 Hz
Mid boost/cut (variable)	± 9.5 dB
Treble frequency (variable)	1.5-10 kHz
Treble boost/cut (variable)	± 10.5 dB
Idle Current	1.3 mA
Dimensions	37.3 x 19.1 x 5 mm



ET5 Frequency Response – Mid Limits



ET5 Frequency Response – Treble Limits

